

Making a Stuffed Lamb Toy

A Gift for Young Children



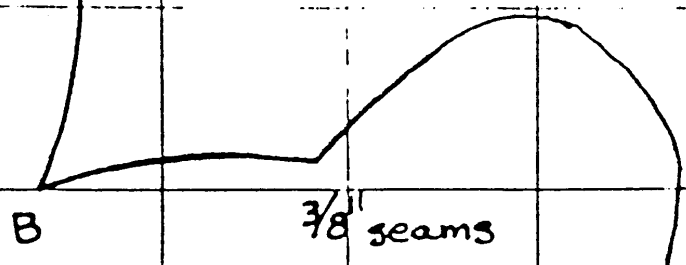
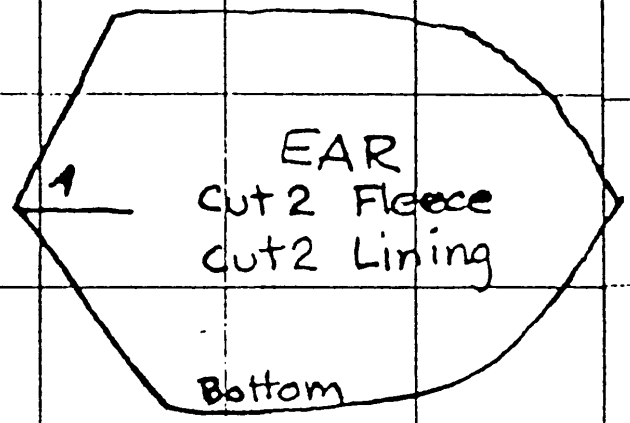
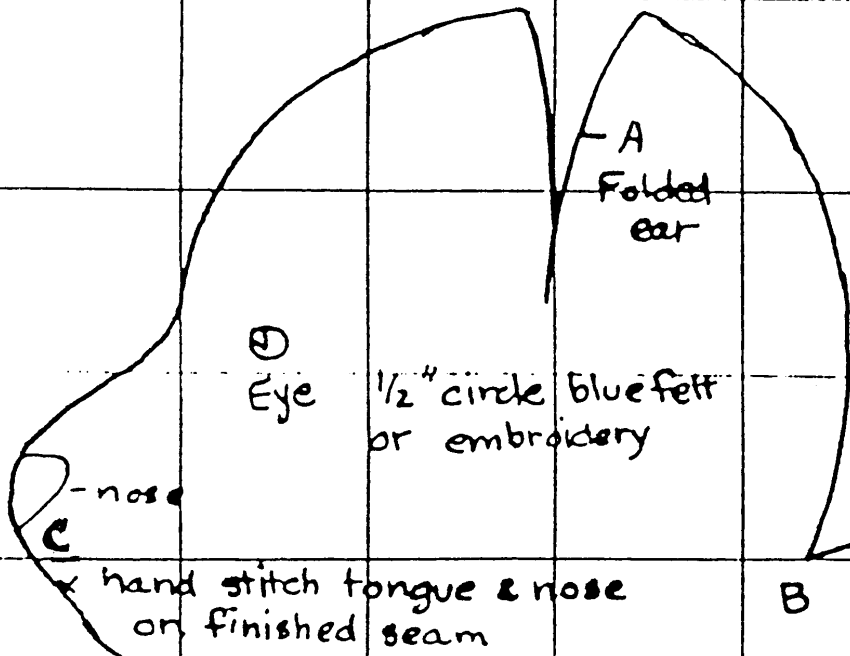
Materials: White flannel fabric (or white fleece)
Polyester fiberfill
Pink flannel for ear lining
Blue, black and pink embroidery thread (or felt) for eyes, nose, and mouth
Pink Ribbon
Small jingle bell (optional)

Directions:

1. Sew the ear pieces to linings. Turn right side out. Insert jingle bell inside one ear. Fold ear at **A**. Sew ear onto body piece, matching **A**'s, so the lining is on the underside of the ear. Complete the head dart on the body piece.
2. Sew head to body piece, matching points **B** and **C**. Finish sewing body pieces together by sewing from **C** to **D** and from **B** to **E**.
3. Slit a 4" hole in the bottom piece for stuffing. Reinforce with 2 rows of fine machine stitching around the slit. (If you prefer, cut the bottom pattern piece with a center seam and leave 3" of the seam open for stuffing.)
4. Embroider eyes, nose and mouth, or sew on felt features. The eyes are blue, the nose black, and the mouth pink.
5. Sew bottom piece to body pieces, forming the legs, matching points **D** and **E**.
6. Turn lamb right side out. Stuff. Sew slit closed with slipstitch. Tie pink ribbon in bow around neck.

Standing Lamb

Scale: 1 square = 1 sq. inch



Patterns for Nose and Mouth if not embroidering:



Embroidered Nose & Mouth



BODY
cut 2 (one right side, one wrong side)

